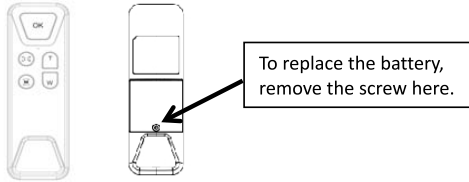


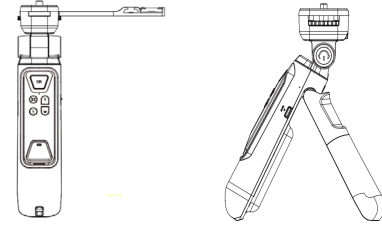
8. **Battery Replacement for Remote Control** When the remote control battery is ran out (the button light is not bright enough or not bright), remove the screws on the back of the remote control, remove the battery cover, and take out the battery. Insert the new battery with the negative side facing down, and put the battery cover back.



B. Specification

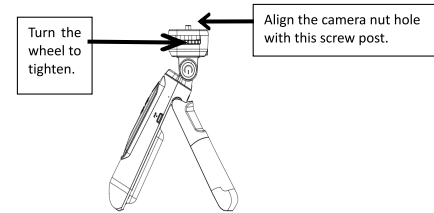
Name	Parameters	Name	Parameters
Tripod Vertical Adjustment Angle	About 135°	Tripod Charging Time	3-4 Hours
Tripod Horizontal Adjustment Angle	360°	Tripod Size	H200*T46(Head)*W40mm
Tripod Battery	3.7V 2500MA	Tripod Load-bearing	Within 2KG
Input Voltage	5V(Type-C)	Tripod Weight	About 195G
Input Current	1A	Remote Control Distance	Within 10 meters
Output Voltage	5V+/-0.3	Remote Control Battery	3V CR2032
Output Current	5V/1A		

Camera Tripod User Manual

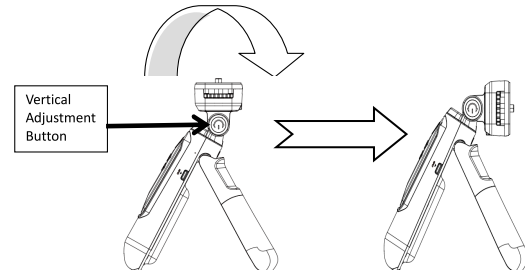


A. Instructions

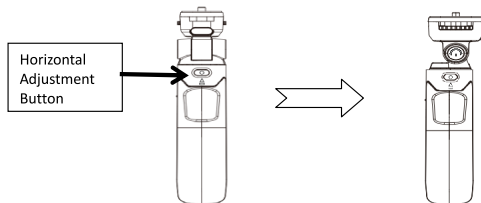
1. **Camera Installation** Align the nut hole of the camera with the screw post of the tripod and insert it, turn the wheel and tighten it.



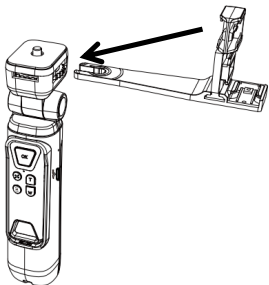
2. **Camera Angle Adjustment** Press and hold the Vertical Adjustment Button and push the head of tripod. (The adjustable angle is about 135 degrees)



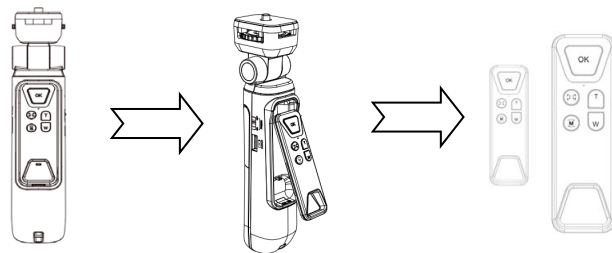
3. Camera Direction Adjustment Press and hold the Horizontal Adjustment Button, turn the head of tripod. (Adjustable angle 360 degrees)



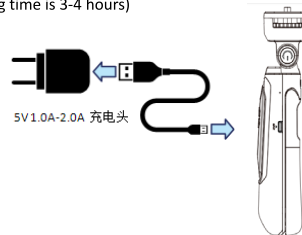
4. Installation of Extension Bracket As shown in the picture below, insert the extension bracket to install it. If it needs to be disassembled, just pull it out in the opposite direction (it can be installed in four directions).



5. Remote Control Instructions As shown in the picture below, the remote control can be taken out from the tripod. Press the **M** switching key to reverse the display. Press and hold the **M** switching key, the camera turns to video **📹** or photo mode **📷**. Press the **W/T** button to zoom, press the **F** Focus button to Focus. press the **OK** button to take a photo. In video mode, press the **OK** button to start the camera. Press the **OK** button to stop recording. The effective distance of the remote control is within 10 meters. (The camera needs to be installed with a memory card and powered on before being remotely controlled.)



6. Charging the Tripod Connect the USB cable to the tripod, then to a wall charger. During charging, the red indicator light is flashing. The red indicator light keeps on after the tripod is fully charged. (Charging time is 3-4 hours)



7. Supply Power to the Camera&Other Equipment Insert Port A of the USB cable into the output interface of the tripod, and connect Port B to the camera or the device to be charged. Turn on the power output switch of the tripod (turn it to the ON position), the blue indicator light will be on, which indicates the camera or device is being charged. (Note: The same USB cable cannot be connected to the output and input ports of the tripod at the same time)

